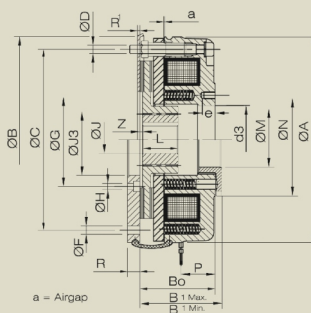
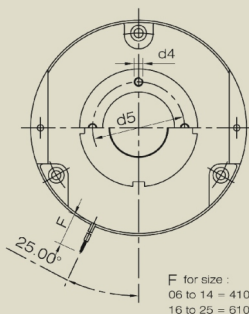


**Electromagnetic clutches,  
Brakes & Clutch Brake Combination**



Spring Loaded Fail Safe Brake  
Type **EFSB**

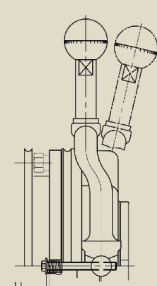
Torque : 05 Nm to 650 Nm  
Brake gets applied when power is  
switched off ensuring 100% Safety

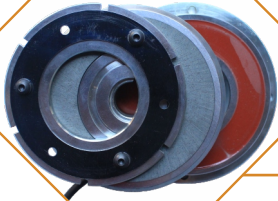


Brake shown with  
Mounting Flange  
Friction Plate  
and Rubber Seal

Parameters

All dimensions are in mm

Size	06	08	10	12	14	16	18	20	25	
Torque M RAT. (Nm)	4	8	16	32	60	80	150	260	400	
Max Speed rpm (min <sup>-1</sup> )	3000	3000	3000	3000	3000	3000	1500	1500	1500	
Input Power P20 (w)	20	25	30	40	50	55	85	100	110	
 <p>Brake shown with Manual Hand Release</p> <p>** Standard bores ** max.bores</p>	ØA	87	105	130	150	165	190	217	302	
	ØB	82	101.5	127	147	163.5	188.5	-	254	
	ØD	36.3	42.8	48.4	54.9	66.3	72.5	83.1	97.6	106.7
	B1 Max.	41.5	48.5	56	64.5	77	82.5	98	114	124
	B1 Min.	39.5	47	52.5	59	71.5	77.5	89	104.6	115.7
	ØC	72	90	112	132	145	170	196	230	278
	ØD	3 x M4	3 x M5	3 x M6	3 x M6	3 x M8	3 x M8	6 x M8	6 x M10	6 x M10
	ØF	3 x 4.5	3 x 5.5	3 x 6.6	3 x 6.6	3 x 9	3 x 9	4 x 9	6 x 11	6 x 11
	ØG	30'	45'	56	62	74	84	100	120	150
	ØH	3 x 4.5	3 x 5.5	3 x 6.6	3 x 6.6	3 x 9	3 x 9	6 x 9	6 x 9	6 x 11
	ØJ3	20/31#	30/41#	40	45	55	65	75	90	120
	L	18	20	20	25	30	30	35	40	50
	ØM	24	26	33	40	48	56	64	73.1	95.1
	ØN	52	60	68	82	92	102	116	135	180
	P	12	14	15	18	20	25	28	35	35
	R	6	7	9	9	11	11	11	11	12.5
R1	1.5	1.5	1.5	1.5	1.5	1.5	-	-	-	
z	1	1.5	2	2	2	2.25	2.75	3.5	4.5	
o	0.2	0.2	0.2	0.3	0.3	0.3	0.4	0.4	0.5	
U	1	1	1	1	1	1.5	1.5	1.5	2	
d3"	25	32	42	50	60	68	75	85	115	
d4	4 x M4	4 x M5	4 x M5	4 x M5	4 x M6	4 x M6	4 x M8	4 x M10	4 x M10	
d5	37.7	49	54	64	75	85	95	110	140	
e	10	12	15	15	15	15	15	20	20	
ØJ"	**	10,11	11,12	11,12	20,24	20,24	25,28	30,35	35,40	45,48
		12,14	14,15	14,15	25	25,28	30,32	36,40	42,45	50,52
		15	19,20	19,20	-	30,32	34,35	42	48	55,60,65
		15	24*	24*	28*	34*	38*	45	50	70*
Inertia J(kg cm <sup>2</sup> )	0.15	0.61	2.0	4.5	6.3	15	29	73	200	
Weight kg	1.300	2.200	3.750	5.750	8.250	11.720	18.150	27.580	42.560	

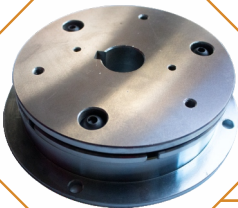
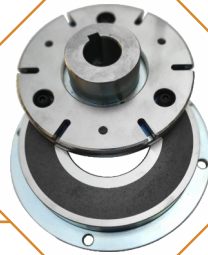


Clutches Bearing Mounted Electromagnetic Clutch  
type **EBMC**

Normally off Torque : 7.5 Nm to 2500Nm

Flange Mounted Electromagnetic Clutch  
Type **EFMC**

Torque 7.5Nm to 2500Nm



Flange Mounted Electromagnetic Brake  
Type **EFMB**

Torque : 7.5 Nm to 2500 Nm  
Brake applies when DC Power is On

Rectifiers  
Type **EH-720-HHD**

Input Voltage: **440 VAC**  
Output Voltage: **190 VDC**



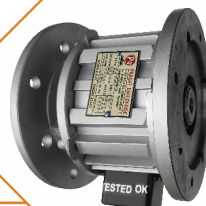
SOLID STATE RECTIFIER  
TYPE:ABCO-EH-720-HHD  
440 VAC / 190 VDC - 2 AMP  
(FOR AC SWITCHING SHORT  
TERMINAL C<sup>-1</sup>)

- ~ ~ + - -



Encased Clutch-Brakes Combination  
Type **ECBC**

Normally off Torque 7.5Nm to 480Nm  
DC Encased Clutch Brake  
Combination Split Shaft Foot Mounted



Hollow  
Type

## Electromagnetic clutches, Brakes & Clutch Brake Combination



### Brake Motor

Motor with Flange mounting  
Brake **(EFMB)**  
and with Spring Loaded fail  
brakes **(EFSB)**  
Ranging from 0.125HP to 15 HP

### Applications (Spring Loaded Fail Safe Brake)



Cranes & Hoists



Machine Tools



Packaging Machines



Textile Machines



Construction Machinery



Windmills



Conveyors



Printing Machines



Elevators



Pallet Truck Drives

### Applications (Encased Clutch-Brakes Combination)



Machine Tools



Welding Machines



Conveyors



Packaging Machines



Spl. Purpose Machines

## TAGROS TECHNOCRAT IND LLP

Plot No.2, Rajkamal Estate, Opp. Sevak Kanta & Jay Ind.,  
Nr. Soni's Chawl, Rakhial Road, Rakhial, Ahmedabad-380023, (Guj), INDIA.  
Mo: +91 99786 09440, +91 99786 05440 | **Email:** info@tagrostechnocrat.com  
**Web:** www.tagrostechnocrat.com | **GSTIN:** 24AAPFT2079K1Z0

## PRAGATI ENTERPRISE

Plot No. 2, Rajkamal Estate, Opp. Sevak Kanta & Jay Ind., Nr. Soni's Chawl,  
Rakhial, Ahmedabad-380023, (Guj.) INDIA, Mo.: +91 98243 22440, +91 99258 36440  
**Email:** pragati.en@gmail.com | **Web:** www.pragatienterprise.in | **GSTIN:** 24ADFPA7783C1ZU